



**spider**<sup>™</sup>  
CUSTOM INSULATION SYSTEM

Builder



Upgrade to superior energy efficiency,  
noise reduction and mold prevention.



## JM Spider™ Improves Energy Efficiency in the Homes You Build.

“ Spider is extremely effective in reducing gaps and voids and increasing the energy efficiency of homes...”

Karen Loerke,  
Owner, Loerke Insulation

The JM Spider Custom Insulation System sprays in to fill all gaps and voids where energy can escape. Your homeowners will appreciate the savings they will get from lowering the cost of heating and cooling their home.

The Spider Custom Insulation System has high thermal performance achieving up to an **R-15 in 2x4 wall cavities** and an **R-23 in 2x6 wall cavities**.

**JM will guarantee the energy savings** on the homes you build with our Performance Home Builder Program and Guarantee. Studies indicate that over 80 percent of homeowners want energy efficient homes that include insulation above code requirements.\* The reason is obvious... **it pays homeowners back** by reducing the operating costs of their home. JM will guarantee the savings to your homeowner.

\* The State of Green Building annual green building survey conducted by the Cahners Residential Group — Professional Builder, Luxury Home Builder, Professional Remodeler and HousingZone.com — in partnership with industry manufacturers and associations.

## JM Spider Adds a Layer of Protection Against Mold in the Homes You Build.

There is a rising concern over some spray systems that use a lot of water and can be a food source for mold.

But JM Spider is made from fiber glass, an inorganic material that is naturally mold resistant. In addition, Spider adhesive contains an EPA registered mold inhibitor, giving you **an extra layer of protection against mold growth** in the wall cavity, improving the quality and durability of the homes you build. What homeowner wouldn't appreciate such protection?

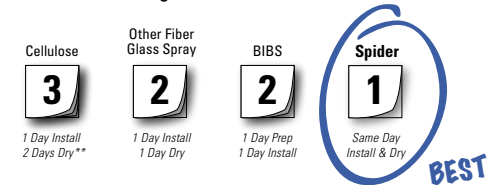
There is also very little moisture used to apply JM Spider. It **sprays on practically dry to the touch**, using less than 8 oz of moisture per cavity in the adhesive. Some other systems use more than 32 oz of water per cavity! In fact, Spider can contain even less moisture than the surrounding wood framing.



## JM Spider Saves Money and Reduces Cycle Time.

JM Spider sprays in practically dry, so in most cases, you can put drywall up in 2-6 hours. Other upgrade spray systems can take 2-3 days to prep, install and dry. **With Spider you can be done in one day.**

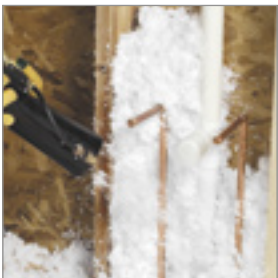
### Average Installation Time\*



According to the NAHB, when you factor in the cost of money, contractor delays, management costs and sales opportunity costs, one day can cost as much or more than \$291! By using JM Spider, you can reduce cycle time by 2-3 days and **save hundreds of dollars per day!**

\* Based on a 2700 SF home.  
\*\* Manufacturer's recommendations.

## JM Spider Reduces Outside Noise in the Homes You Build.



Spider sprays in, filling gaps and voids where outside noise can travel into the home.

For example, **Spider achieves a Sound Transmission Class (STC) of 43 in an exterior 2x4 wood framed wall** with 1/2" particle board siding, 1/8" pressed cardboard sheathing and 1/2" gypsum board. Compare with other systems, and you'll see that Spider is the best choice to help reduce sound transmission from outside noise. **Homeowners will enjoy the peace and quiet.**

“ I was impressed by the speed of installation...there was quite a bit of a 'WOW' factor throughout the whole process.”

Shawn Stolte,  
President, Stolte Construction

*"Our business is booming since we introduced Spider to our builders. Builders immediately recognize the value that the Spider system brings to homebuyers in increased energy efficiency, lower utility bills, improved indoor environments and overall family comfort."*

– Kevin Kinzler, Owner, Kinzler Construction

## **With all the remarkable features of the JM Spider™ Custom Insulation System...**

- Formaldehyde-free
- Fiber glass
- Energy efficient
- Superior sound control
- Gap-free coverage
- Mold and mildew resistant
- Fast drying
- Fast installation
- No settling
- Noncombustible
- Non-corrosive
- Durable
- Neat, professional look
- Performance Home Guarantee

**...why would Homeowners want anything else?**



It's Comforting to Know We're There

Look for the JM Spider demo video at:  
**[www.JM.com/spider](http://www.JM.com/spider)**

And for more information please visit:  
**[www.JM.com/builder](http://www.JM.com/builder)**

**Johns Manville**

717 17th Street (80202)  
P.O. Box 5108  
Denver, CO 80217-5108  
1-800-654-3103  
**[www.jm.com](http://www.jm.com)**